


ROOTT B BS

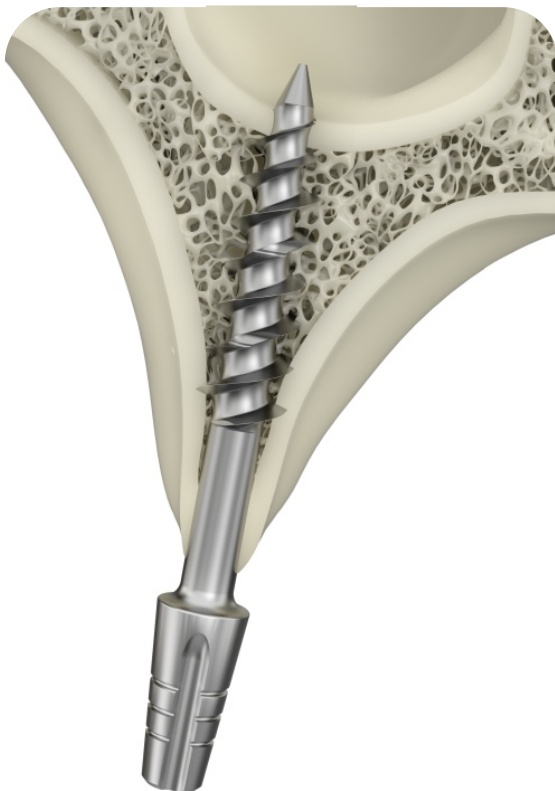
Cement & telescopic retained

One-piece implant

-  Avoids bone grafting
-  Time & cost saving
-  Immediate loadings
-  Extraction sockets
Healed bone

Especially effective in atrophic bone with bi-cortical engagement

ROOTT B and ROOTT BS one-piece implants are designed for deficient bone in height and width. It provides efficiency in time and costs, with a bending option and a very sharp thread to enter corticalized and medullary bone. Designed to bypass the mandibular nerve, and for engagement of the cortical bone at the fusion of the pterygoid with the maxilla. Can be used with ROOTT C implants



Bending

Abutment direction can be adjusted up to 15° relative to the implant axis, when implant neck is equal or longer than 3mm.



Surface

ROOTT B implant surface is polished for protection from bacteria accumulation

B **BS**



ROOTT BS is RBM blasted and anodized. RBM surface provides:

- high BIC*
- great osseointegration
- high success rate

*Bone-to-implant connection

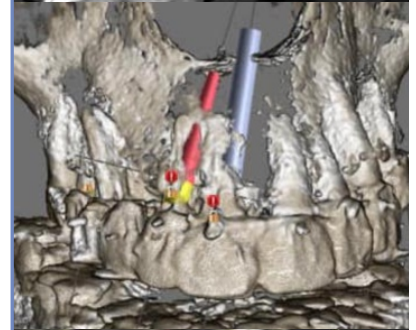
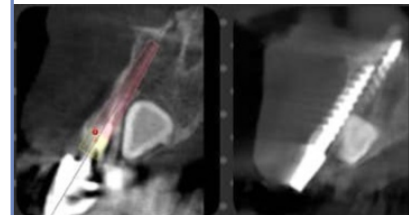
Sizes

Ø: 3.5–10.5mm
L: 6–26mm

Ø: 3.5–4.5mm
L: 6–26mm

Clinical cases

By Dr. Ariel Pedernera



Prosthetic variety

Cement retain with trimmable external platform, burnouts or cement-free option with patented telescopic abutments.

Telescopic

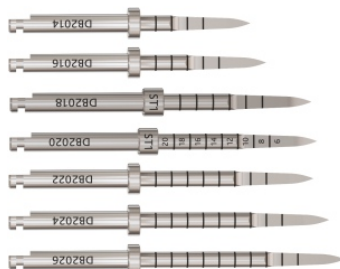


Direct scan

5mm
4mm
3mm



Easy management



More cases



o / L	6 mm	8 mm	10 mm	12 mm	14 mm	16 mm	18 mm	20 mm	22 mm	24 mm	26 mm
	In 1.5	In 3	In 3	In 3	In 5	In 7	In 7	In 7	In 7	In 7	In 7

ø 3.5	B3506	B3508	B3510	B3512	B3514	B3516	B3518	B3520	B3522	B3524	B3526
-------	-------	-------	-------	-------	-------	-------	-------	-------	-------	-------	-------

øi 3.1
øii 1.6
øai 1.4
n 2.05



ø 4.5	B4508	B4510	B4512	B4514	B4516	B4518	B4520	B4522	B4524	B4526
-------	-------	-------	-------	-------	-------	-------	-------	-------	-------	-------

øi 4.2
øii 2.0
øai 1.7
n 2.35



ø 5.5	B5508	B5510	B5512	B5514	B5516	B5518	B5520
-------	-------	-------	-------	-------	-------	-------	-------

øi 4.3
øii 2.1
øai 1.4
n 2.35



o / L	8 mm ln 1.5	10 mm ln 3	12 mm ln 3	14 mm ln 5	16 mm ln 7	18 mm ln 7
-------	----------------	---------------	---------------	---------------	---------------	---------------

ø 6.5	B6508	B6510	B6512	B6514	B6516	
-------	-------	-------	-------	-------	-------	--

øi 5,5
øii 1.7
øai 1.4
n 2.35



ø 8.5	B8508	B8510	B8512	B8514	B8516	B8518
-------	-------	-------	-------	-------	-------	-------

øi 7,3
øii 1.7
øai 1.7
n 2.35

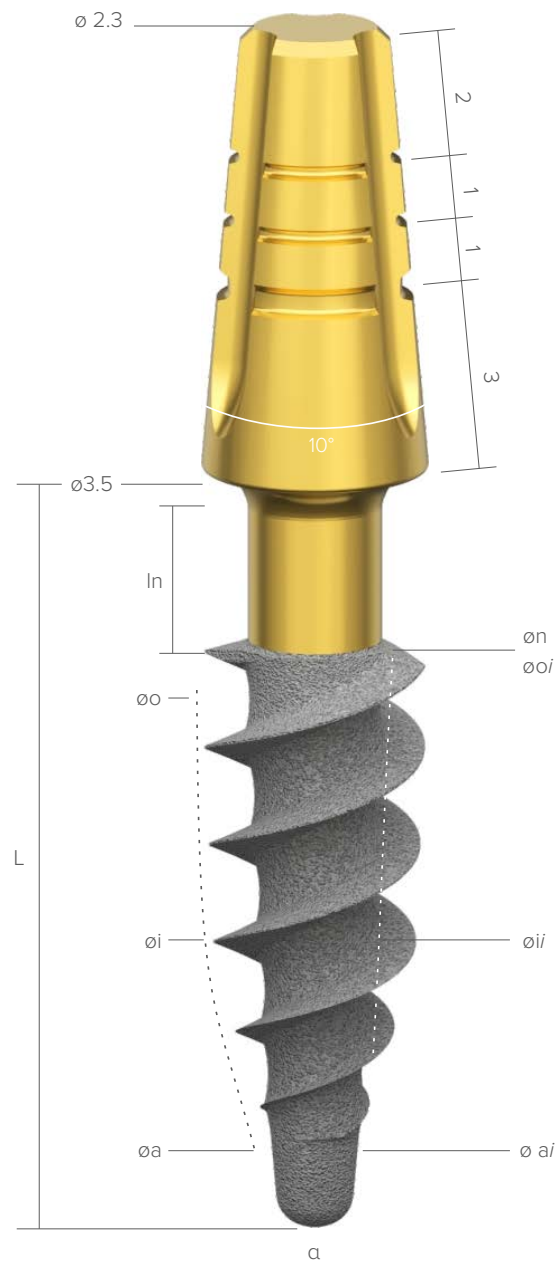


ø 10.5	B1110	B1112	B1114
--------	-------	-------	-------

øi 7,1
øii 1,9
øai 1,7
n 2,35



ROOTT BS

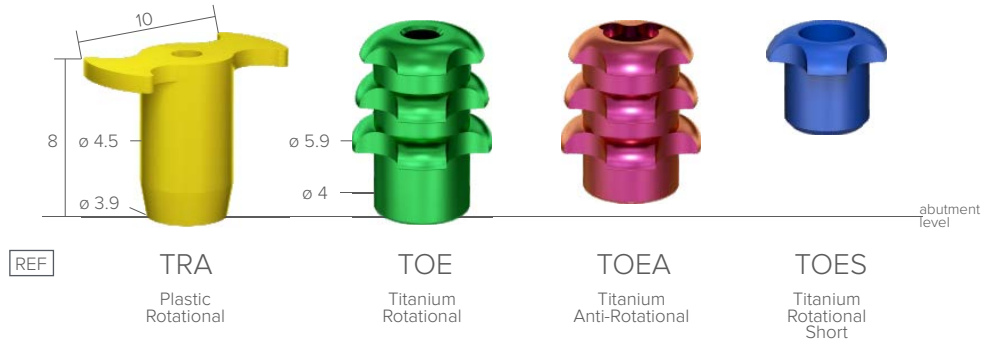


o - occlusal diameter (mm); i - intraosseous diameter (mm); a - apical diameter (mm); n - neck diameter;
 α - total internal angle ($^\circ$); s - intraosseous square area (mm²); i = internal.

o / L	6 mm	8 mm	10 mm	12 mm	14 mm	16 mm	18 mm	20 mm	22 mm	24 mm	26 mm
	ln 1.5	ln 3	ln 3	ln 3	ln 5	ln 7	ln 7	ln 7	ln 7	ln 7	ln 7
∅ 3.5	B3506ss	B3508ss	B3510ss	B3512ss	B3514ss	B3516ss	B3518ss	B3520ss	B3522ss	B3524ss	B3526ss
∅i 3.1 ∅i/ 1.6 ∅a/ 1.4 n 2.05	s 73 a 18	s 45 a 13	s 60 a 6	s 80 a 5	s 80 a 5	s 80 a 5	s 103 a 4	s 126 a 3	s 146 a 3	s 165 a 2	s 188 a 2
											
	B4506ss	B4508ss	B4510ss	B4512ss	B4514ss	B4516ss	B4518ss	B4520ss			
∅ 4.5	s 116 a 13	s 68 a 9	s 90 a 6	s 122 a 5	s 122 a 5	s 122 a 5	s 158 a 4	s 195 a 3			
∅i 4.2 ∅i/ 2.0 ∅a/ 1.7 n 2.35											

External platform

Transfers



Analogs



Healing abutments



Telescopic abutments, titanium



Burn-out abutments

